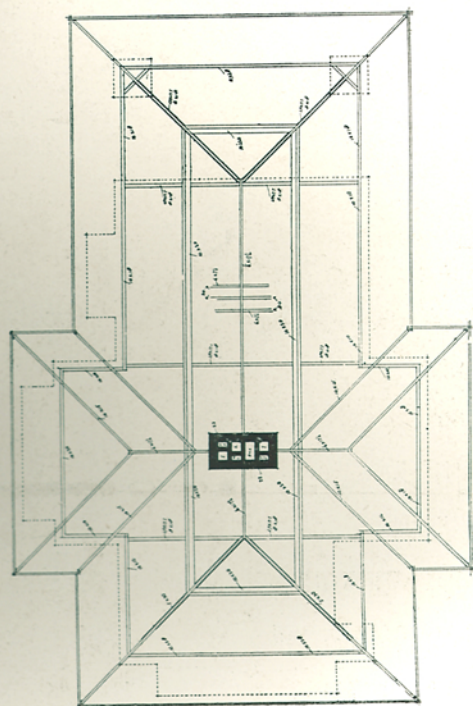
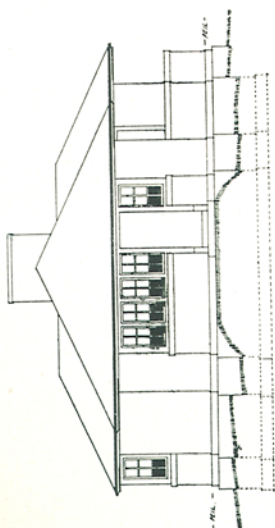


ZUID CEVEL.

OOST CEVEL.



PLAN KAP.



NOORD CEVEL.



BIJLAGE VI VAN „DE STIJL”, TWEDE JAARGANG N<sup>o</sup> 3.  
 ZOMERHUIS TE HUIS TER HEIDE (1915). ARCHITECT ROBT. VAN 'T HOFF.